

CORPORATE  
PRESENTATION  
2026



**CORE**  
CRITICAL METALS

CRITICAL METALS AT THE CORE  
OF ADVANCED TECHNOLOGIES  
AND DEFENSE

TSX.V: CCMC | OTC: CCMCF | FWB: 1X10

# LEGAL DISCLAIMER

**THIS MANAGEMENT PRESENTATION** (The "Presentation") was prepared as a summary overview of the current affairs of Core Critical Metals Corp. "Core" or the "Company") and was not prepared for the purpose of assisting prospective investors in making a decision to invest in Core. Information disclosed in this presentation is current as of Q3/2025, except as otherwise provided herein and Core does not undertake or agree to update this presentation after the date hereof. All information contained in this presentation is derived solely from management of Core and otherwise publicly available third-party information that has not been independently verified by the Company. Further, the Company does not make any representation as to the completeness, truth or accuracy of the information contained in this presentation. The Company expressly warns readers not to rely on the information contained herein as advice (legal, financial, tax or otherwise) to current or potential investors. Accordingly, any use of this information is at your risk and without liability to the Company. This presentation does not constitute and should not be construed as either a public or private offer to sell or the solicitation of an offer to purchase securities in the capital stock of Core in any jurisdiction in which such offer, solicitation or sale would be unlawful. Each prospective investor should contact his/her or its own legal adviser, independent financial adviser or tax adviser for legal, financial or tax advice regarding investment related decisions respecting the securities of the Company. No person has been authorized to give any information or make any representation other than those contained in this presentation and, if given and/or made, such information or representations must not be relied upon as having been so authorized.

**FORWARD-LOOKING STATEMENTS** This Presentation contains certain statements, which may constitute "forward-looking information" within the meaning of Canadian securities law requirements (collectively, "Forward-looking statements"). Forward-looking statements involve statements that are not based on historical information but rather relate to future operations, strategies, financial results or other developments. Forward-looking statements are necessarily based upon estimates and assumptions, which are inherently subject to significant business, economic and competitive uncertainties and contingencies, many of which are beyond Core's control and many of which, regarding future business decisions, are subject to change. These uncertainties and contingencies can affect actual results and could cause actual results to differ materially from those expressed in any Forward-looking statements made by or on Core's behalf. Although Core has attempted to identify important factors that could cause actual actions, events or results to differ materially from those described in Forward-looking statements, there may be other factors that cause actions, events or results to differ from those anticipated, estimated or intended. All factors should be considered carefully, and readers should not place undue reliance on Core's forward-looking information. Examples of such Forward-looking statements within this Presentation include statements relating to the future price of minerals, future capital expenditures, outlook of the Rare Earth Minerals market, success of exploration activities, mining or processing issues, government regulation of mining operations and environmental risks. Generally, forward-looking information can be identified by the use of forward-looking terminology such as "expects," "estimates," "anticipates," or variations of such words and phrases (including negative and grammatical variations) or statements that certain actions, events or results "may," "could," "might" or "occur".

Forward-looking Statements are not guarantees of future performance and involve risks, uncertainties and assumptions, which are difficult to predict. This Presentation reflects Core's current views with respect to future events and are necessarily based upon a number of assumptions and estimates that, while considered reasonable by Core, are inherently subject to significant business, economic, competitive, political and social uncertainties and contingencies. Many factors, both known and unknown, could cause actual results, performance or achievements to be materially different from the results, performance or

achievements that are or may be expressed or implied by such forward-looking information contained in this Presentation and documents incorporated by reference, and we have made assumptions based on or related to many of these factors. Such factors include, without limitation: risks related to Core's mineral properties being subject to prior unregistered agreements, transfers or claims and other defects in title; risks related to Core's history of losses, which may continue in the future; risks related to increased competition and uncertainty related to additional financing that could adversely affect its ability to attract necessary capital funding or obtain suitable properties for mineral exploration in the future; risks related to its officers and directors becoming associated with other natural resource companies, which may give rise to conflicts of interest; uncertainty and volatility related to stock market prices and conditions; further equity financing(s), which may substantially dilute the interests of Core's shareholders; risks relating to its exploration operations; dependence on general economic, market or business conditions; changes in business strategies; environmental risks and remediation measures; and changes in laws and regulations; fluctuations in spot and forward markets for base and rare metals and certain other commodities (such as natural gas, fuel oil and electricity); the growth of the global critical and Rare Earth Minerals markets; the utilization of existing assets at the Company's mineral properties; the cost of exploration; restrictions on mining in the jurisdictions in which Core operates; laws and regulations governing Core's operation, exploration and development activities; Core's ability to obtain or renew the licenses and permits necessary for the operation and expansion of its existing operations and for the development, construction and commencement of new operations; risks and hazards associated with the business of mineral exploration, development and mining (including environmental hazards, potential unintended releases of contaminants, industrial accidents, unusual or unexpected geological or structural formations, pressures, cave-ins and flooding); the speculative nature of mineral exploration and development; the inability to determine, with certainty, production and cost estimates; inadequate or unreliable infrastructure (such as roads, bridges, power sources and water supplies); environmental regulations and legislation; the effects of climate change, extreme weather events, water scarcity, and seismic events, and the effectiveness of strategies to deal with these issues; risks relating to Core's exploration operations; fluctuations in currency markets (such as the US dollar versus the Canadian dollar); the volatility of the metals markets, and its potential to impact our ability to meet its financial obligations; Core's ability to recruit and retain qualified personnel; employee relations; disputes as to the validity of mining or exploration titles or claims or rights, which constitute most of its property holdings; Core ability to complete and successfully integrate acquisitions; increased competition in the mining industry for properties and equipment; limited supply of materials and supply chain disruptions; relations with and claims by indigenous populations; relations with and claims by local communities and non-governmental organizations; the effectiveness of its internal control over financial reporting; and claims and legal proceedings arising in the ordinary course of business activities.

Forward-looking information is made based on management's beliefs, estimates and opinions and are given only as of the date of this Presentation. Core undertakes no obligation to update forward-looking information if these beliefs, estimates and opinions or other circumstances should change, except as may be required by applicable law. Current and potential investors should not place undue reliance on forward-looking statements due to the inherent uncertainty therein. All forward-looking information is expressly qualified in its entirety by this cautionary statement.

**QUALIFIED PERSON (QP)** The technical content of the Presentation has been reviewed and approved by Deepak Varshney, P.Geo, a Qualified Person under National Instrument 43-101 - *Standards of Disclosure for Mineral Projects*.

**Core Critical Metals Corp. (TSX.V: CCMC | OTC: CCMCF | FWB: 1X10)** is a North American exploration company focused on advancing high-impact critical metals projects essential to electrification, advanced technology, and defense supply chains.



### Flagship Lucky Mike Property — Tier-1 Location:

District-scale silver-copper-tungsten project in British Columbia's premier copper belt, adjacent to Teck's Highland Valley Copper Mine — Canada's largest copper operation with mine life extended to 2046.



### Significant Discovery Upside:

7-km skarn alteration footprint, high-grade copper showings, and multiple untested targets indicating potential for large porphyry centers at depth.



### Experienced Management & Value Creation Focus:

Leadership team with decades of exploration, financing, and development experience in the resource sector.



### Significant Historic Copper Resource:

: Hosts a 73.5 million tonne historic estimate at 0.27% Cu Eq equating to approximately 402 million pounds of contained copper<sup>[1]</sup>.



### Dual Critical Metals Exposure — Copper & Tungsten:

Strategic metals vital to electrification, AI infrastructure, renewable energy, and defense applications, with strong long-term supply-demand fundamentals.



### Drill-Ready with Established Infrastructure:

Fully permitted with road access, nearby power, water, and skilled workforce in a prolific mining district.



[1] <https://www.accessnewswire.com/newsroom/en/metals-and-mining/core-critical-metals-corp.-announces-acquisition-of-the-advanced-lucky-mike-silve-1139204>

# COPPER – SUPPLY CRUNCH

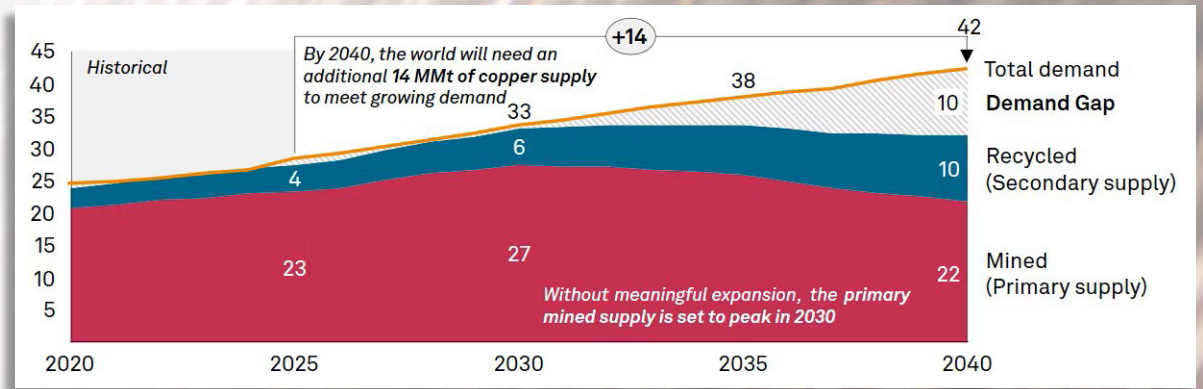
The AI Data Center Boom, and Renewable Energy Revolution, are driving massive new demand and creating a potential **10 million tonne supply deficit by 2028**.<sup>[1]</sup>

**Copper** is essential for the generation, transmission, and use of electricity. But the demand for copper will outrun supply unless there is major adjustment across the copper supply system.<sup>[1]</sup>

Billionaire mining magnate Robert Friedland predicts a massive, long-term supply "train wreck". He argued in 2024 that **"copper prices must rise significantly—potentially to \$15,000/tonne"**.<sup>[3]</sup>

Copper prices have surged to historic highs, exceeding **\$14,000 a tonne in late January 2026**, driven by a massive intensifying supply constraints and decades of underinvestment in new mining projects.<sup>[4]</sup>

[1] <https://www.spglobal.com/en/research-insights/special-reports/copper-in-the-age-of-ai>  
 [2] <https://www.woodmac.com/press-releases/soaring-copper-demand-an-obstacle-to-future-growth/>  
 [3] <https://financialpost.com/commodities/mining/billionaire-robert-friedland-copper-train-wreck>  
 [4] <https://tradingeconomics.com/commodity/copper>



## COPPER'S CRITICAL ROLE IN DATA CENTERS: POWERING THE DIGITAL AGE

### KEY APPLICATION AREAS

- POWER DISTRIBUTION & GROUNDING**  
Essential for efficient electricity delivery. Used in power cables, busbars, connectors, and grounding systems due to high electrical conductivity.
- THERMAL MANAGEMENT**  
Critical for dissipating intense heat from servers. Found in heat exchangers, heat sinks, and liquid-cooling piping due to superior thermal conductivity.
- DATA TRANSMISSION (SHORT-RANGE)**  
Reliable, high-speed interconnects within racks and between servers. Copper twisted-pair cables are preferred for short distances.

### GROWING DEMAND & IMPACT

**PROJECTED ANNUAL GLOBAL COPPER DEMAND IN DATA CENTERS**

2024: ~0.5 Million Tonnes  
2050: ~3 Million Tonnes  
Demand expected to grow six-fold, driven by AI and cloud computing.

**1 MW POWER CAPACITY VS CASE STUDY: ~27 TONNES OF COPPER**

Note: Estimates vary, especially for modern AI-ready centers.

### WHY COPPER?

- EXCELLENT CONDUCTIVITY** (Electrical & Thermal)
- MALLEABILITY & DURABILITY**
- CORROSION RESISTANCE**

Source: S&P Global

# TUNGSTEN – CRITICAL DEMAND

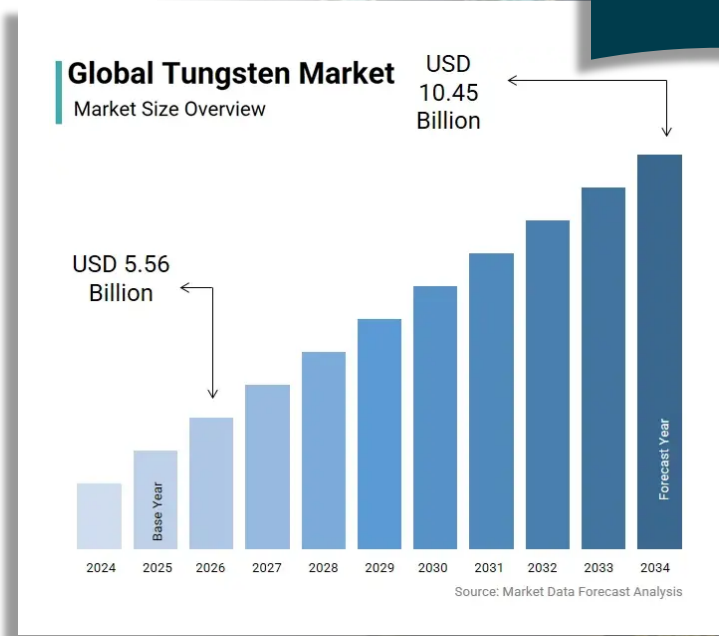
**Tungsten** has the highest melting point of any metal and very high density making it indispensable for extreme-systems. This ultra-hard metal is used in **aerospace components, advanced chips artillery shells, armor plating and cutting tools**; about 60% of U.S. consumption goes into tungsten carbide for industrial applications.<sup>[1]</sup>

**China dominates global supply and produced over 80% of the world's tungsten in 2025,**<sup>[2]</sup> while commercial mining ceased in the United States after 2015.<sup>[2]</sup> In 2026 China introduced massive export restrictions driving up prices and sending Western importers scrambling.<sup>[3]</sup>

The US government's 'Project Vault' is a **\$12 billion initiative** to stockpile critical minerals including tungsten.<sup>[4]</sup>

Tungsten prices hit record highs as China tightens export controls  
*Reuters*

A 155mm artillery shell contains ~15 lbs of tungsten, and NATO is ramping up to produce over 3 million shells per year.  
*Mordor Intelligence*



## TUNGSTEN PROPERTIES



**3,422°C MELTING POINT**



**5,700°C BOILING POINT**



**19.25 CM<sup>3</sup> DENSITY**



**HIGH CONNECTIVITY**



**WEAR RESISTANT**

[1] <https://www.reuters.com/markets/commodities/what-are-five-new-critical-metal-exports-restricted-by-china-2025-02-04>

[2] <https://financialpost.com/commodities/mining/china-chokes-tungsten-supply>

[3] <https://www.reuters.com/world/americas/tungsten-rises-record-highs-export-curbs-turn-up-supply-heat-2026-01-29/>

[4] <https://www.mining.com/web/project-vault-wins-some-metals-industry-support-as-stocks-gain>

# NICKEL – THE ENERGY METAL

**Nickel** has outstanding physical and chemical properties, which make it **essential in hundreds of thousands of products**. Its biggest use is in alloying - particularly with chromium and other metals to produce stainless and heat-resisting steels.[1]

Nickel is one of the elements that plays a critical enabling role in the energy transition. The pace of energy transition is increasing as green growth stimulus packages are introduced, and economies and companies alike commit to net carbon neutrality. The properties of nickel facilitate the deployment of the entire spectrum of clean energy technologies – **geothermal, batteries for EVs and energy storage, hydrogen, hydro, wind and concentrating solar power**. It is also necessary **in nuclear energy** technologies as well as carbon capture and storage.[1]

**Nickel is officially designated as a critical mineral by the USGS** and other nations due to its essential role in stainless steel, EV batteries, and renewable energy infrastructure. **Global demand is projected to double by 2040**, driven by its necessity in high-energy density batteries, making it a cornerstone for the green energy transition.[2]

[1] <https://www.reuters.com/markets/commodities/what-are-five-new-critical-metal-exports-restricted-by-china-2025-02-04>  
 [2] <https://financialpost.com/commodities/mining/china-chokes-tungsten-supply>  
 [3] <https://www.reuters.com/world/americas/tungsten-rises-record-highs-export-curbs-turn-up-supply-heat-2026-01-29/>  
 [4] <https://www.mining.com/web/project-vault-wins-some-metals-industry-support-as-stocks-gain>

## NICKEL PROPERTIES



1,453°C MELTING POINT



RESISTS CORROSION & OXIDATION



HIGHLY DUCTILE



MAGNETIC AT ROOM TEMPERATURE



ALLOYS READILY

Nickel is a metal essential for modern life. 64% goes toward stainless steel. It drives the green economy via EV batteries, and aerospace via superalloys. With Canada being a top producer. *Natural Resources Canada*

Precedence  
RESEARCH

Nickel Market Size 2025 to 2034 (USD Billion)



Source: <https://www.precedenceresearch.com/nickel-market>



# LUCKY MIKE PROJECT

**Lucky Mike Project**  
British Columbia, Canada  
Copper-Tungsten  
7,700 hectares (19,000 acres)



**LUCKY MIKE (LMSL) PROJECT**  
LOCATION MAP



1 : 6,000,000



## Lucky Mike Project Highlights

### Tier-1 Location in BC's Premier Copper Belt

Located in south-central British Columbia within the prolific Quesnel Trough, adjacent to Teck's Highland Valley Copper Mine and along a 150-km trend of major porphyry deposits including New Afton and Copper Mountain.

### Large Historic Copper Resource

Historic estimate of ~73.5 Mt grading 0.27% CuEq (~402 million lbs contained copper), demonstrating a substantial mineralized system with expansion potential.<sup>[1]</sup>

### Copper-Tungsten Critical Metals System

Skarn and porphyry mineralization with historic tungsten drilling averaging ~0.312% WO<sub>3</sub> over ~7.6 m widths, highlighting strategic metal potential.<sup>[2]</sup>

### District-Scale Exploration Footprint

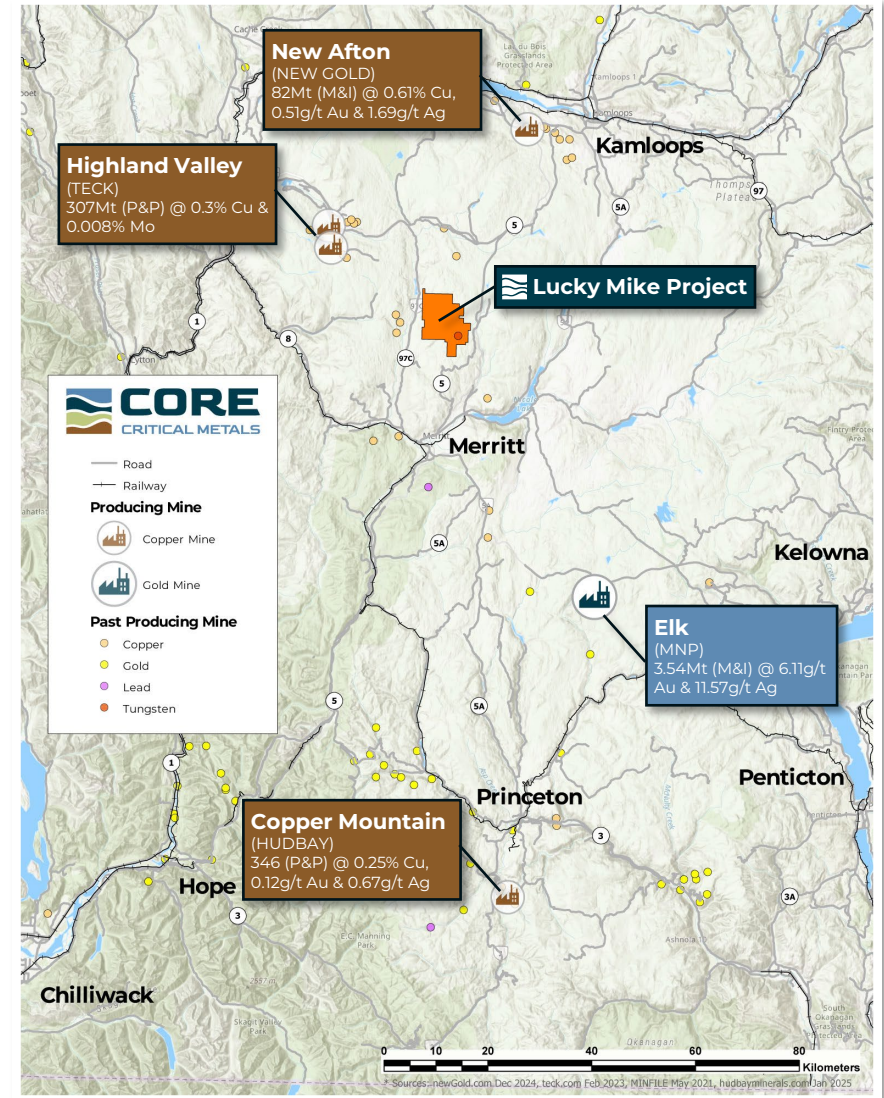
Extensive ~7 km skarn alteration zone interpreted to represent multiple porphyry centers and significant discovery potential.

### Drill-Ready with Approved Permits

Fully permitted with defined targets, enabling immediate drilling to vector toward higher-grade porphyry cores and expand known mineralization.

### Excellent Infrastructure & Access

Extensive logging road network, nearby power and water, skilled local workforce, and close proximity to the Coquihalla Highway between Kamloops and Merritt.



[1] <https://www.accessnewswire.com/newsroom/en/metals-and-mining/core-critical-metals-corp.-announces-acquisition-of-the-advanced-lucky-mike-silver-1139204>

[2] 2024 Assessment Report on Exploration Activities at the Lucky Mike Property.

A qualified person has not done sufficient work to classify the historical estimate as current mineral resources or mineral reserves. The issuer is not treating the historical estimate as current mineral resources or mineral reserves and the historical estimate should not be relied upon.

# LUCKY MIKE PROJECT

## Lucky Mike Project History

The property is situated in the Quesnel trough, one of Canada's most well-established copper producing regions. Lucky Mike was originally discovered in 1916, and 1,932 Lbs of copper. In the 1940s the claim attracted attention for its copper and tungsten but was not developed. <sup>[1]</sup>

Historic estimate of **~73.5 Mt grading 0.27% CuEq (~402 million lbs contained copper)**, demonstrating a substantial mineralized system with expansion potential.<sup>[1]</sup>

Numerous historic Assessment Reports describe the geology and mineralization at the Lucky Mike project are suggestive of a common link to a buried porphyry system. <sup>[1]</sup>

## Adjacent Property

Mine Life Extension (HVC MLE) for adjacent Highland Valley project / details:  
In June 2025, the provincial government granted an environmental assessment certificate for the Life Extension project, which officially began construction in August 2025.

Timeline: The extension moves the mine's closure date from 2028 out to 2046.

Investment: The project involves a capital investment of \$2.1 to \$2.4 billion, making it the largest critical minerals investment in B.C. history.

Production Goals: It is expected to yield an additional 2 million tonnes of copper over the extended life of the mine.

[1] 2024 Assessment Report on Exploration Activities at the Lucky Mike Property.  
A qualified person has not done sufficient work to classify the historical estimate as current mineral resources or mineral reserves. The issuer is not treating the historical estimate as current mineral resources or mineral reserves and the historical estimate should not be relied upon.

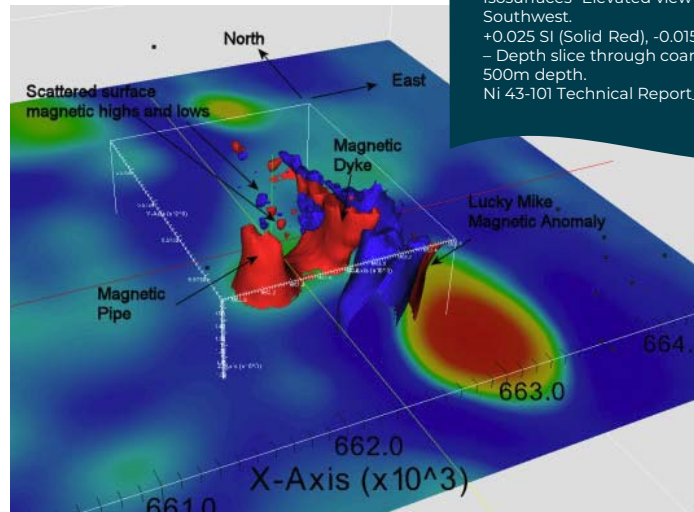
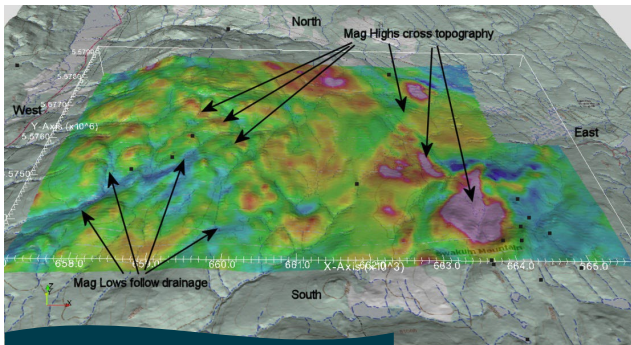




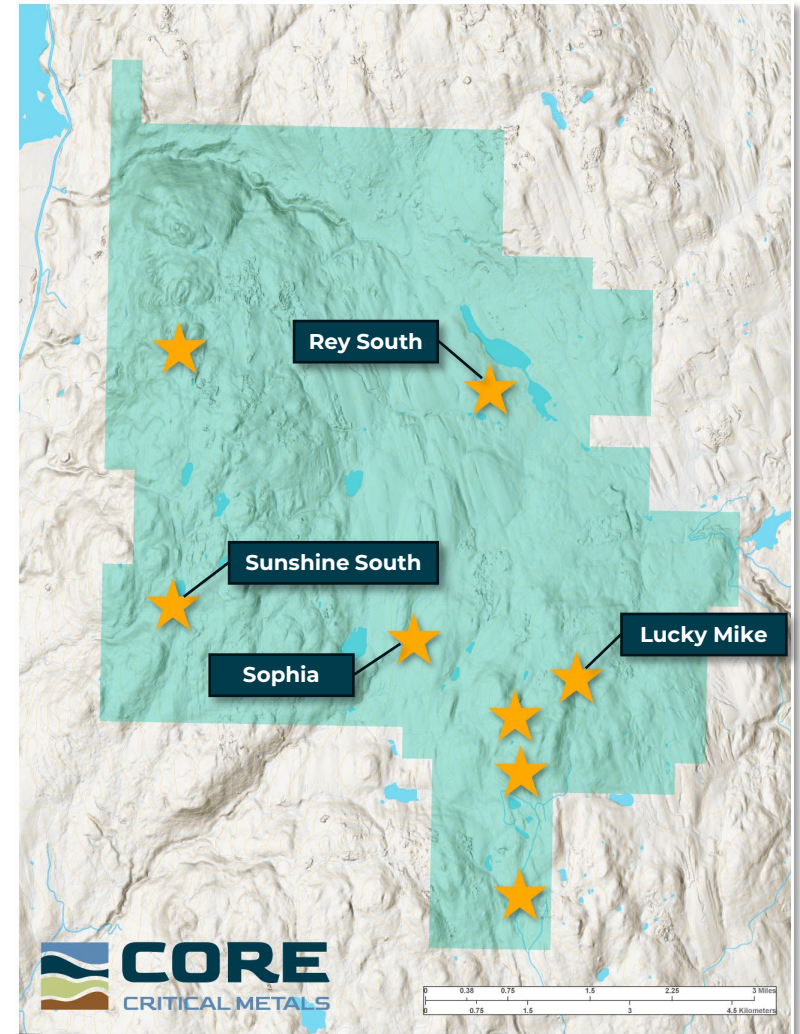
## Lucky Mike Project Mineralization and Alteration

There are four main and several minor copper, lead, zinc, and gold showings on the Lucky Mike Property.

1. Lucky Mike – Skarn – Copper, Silver, Zinc, Lead, Tungsten
2. Sunshine – Polymetallic Vein / Stockwork – Zinc, Lead, Copper
3. Sophia – Polymetallic Vein / Stockwork / Breccia – Zinc, Lead, Copper
4. Rey Lake – Porphyry – Copper-Molybdenite-Silver +/- Gold



Mag3D Inversion – Window 1 - Isosurfaces -Elevated view from Southwest.  
 +0.025 SI (Solid Red), -0.015 SI (Solid Blue)  
 – Depth slice through coarse inversion at 500m depth.  
 Ni 43-101 Technical Report\_Sep 17th 2012



\*\*Rey lake deposit estimate is historical and non-compliant with NI-43-101. Further drilling is needed to verify this resource (3. T. R. Tough & Associates, 1974; 4. ARIS15312; 5. Plate Resources NI-43-101, 2013)

# LUCKY MIKE PROJECT

## Rey Lake Copper Porphyry Deposit

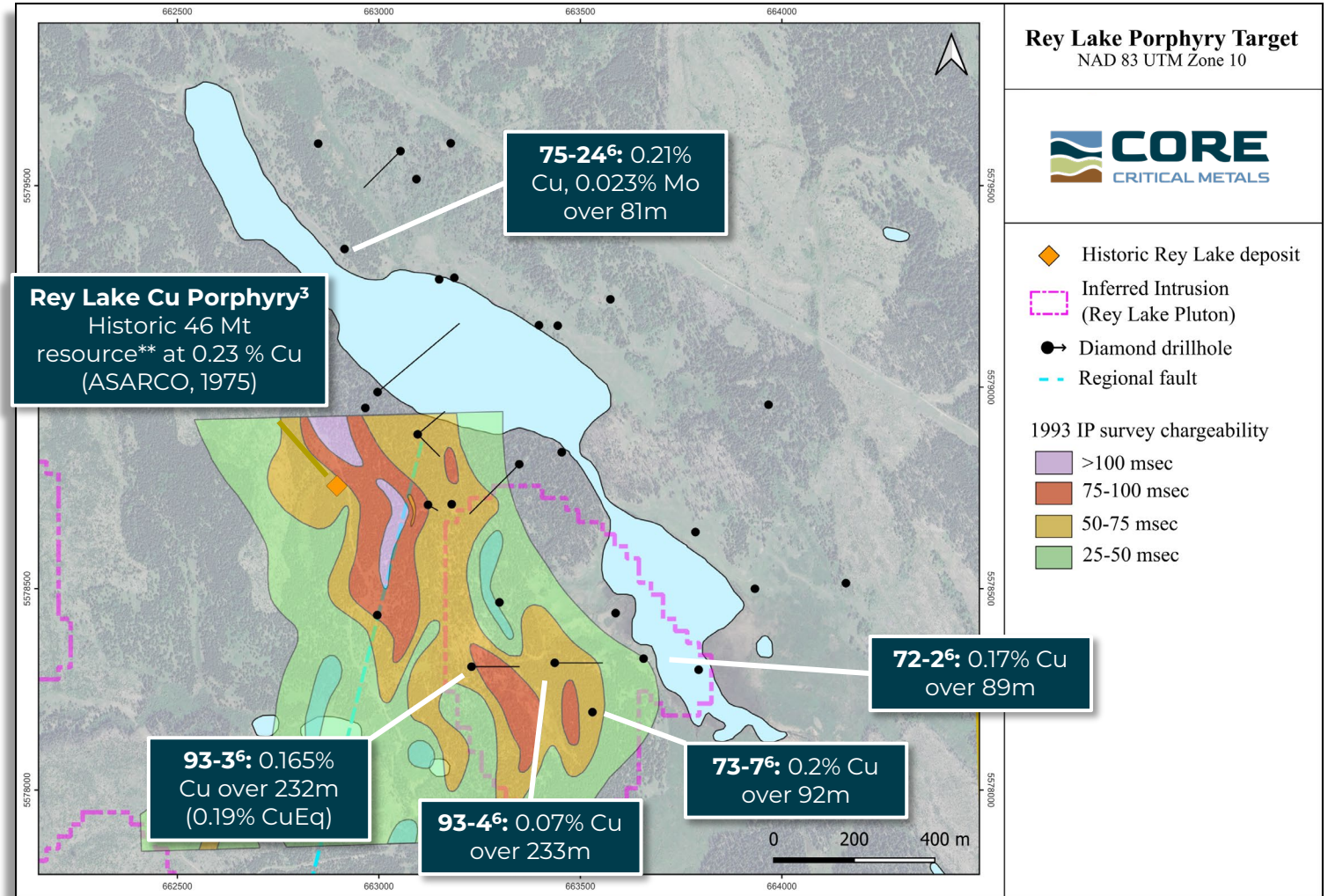
Mineralization is associated with fracturing in andesites that are thermally altered and metamorphosed and host disseminated pyrite

Mineral resource estimate based on drilling in 1972-1973 (T. R. Tough & Associates, 1974) produced resource estimate of 46 Mt at 0.23% Cu

GoldSpot data review (2022) outlines inferred extent of Rey Lake Pluton, southeast of the historic resource, where 1993 drilling (Hole 93-3) returned 0.165% Cu and 0.07% Mo over 232m (0.19% Cu eq)

Cu intercepts north of Rey Lake (75-24) indicates a potential extension and strike length of up to 1200m

\*\*Rey lake deposit estimate is historical and non-compliant with NI-43-101. Further drilling is needed to verify this resource (3. T. R. Tough & Associates, 1974; 4. ARIS15312; 5. Plate Resources NI-43-101, 2013)



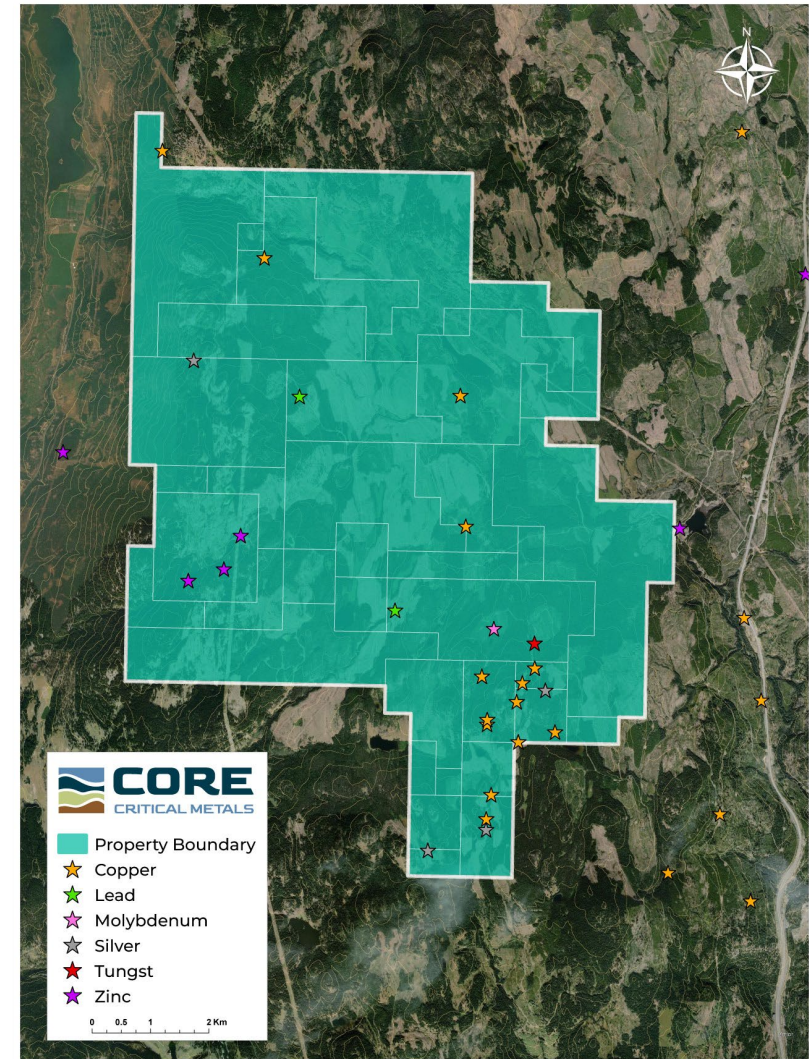
## Lucky Mike Project Workplan

### Drill-Ready and Permitted

Led by a skilled team with decades of experience in exploration, and operations, including recent porphyry discoveries. Our upcoming Phase One exploration program is currently in the final stages of development.

### District-Scale Potential in a World-Class Mining Friendly Region

The Nicola Mining District is home to multiple active mines, excellent local infrastructure and a skilled local workforce. Provincial highways and backroads allow year-round access to the property. Proximity to power, water, and just 20 km north of Merritt.





# TIMMINS PROJECT

**Timmins Project**  
Ontario, Canada  
Nickel  
5,300 hectares (13,100 acres)



**TIMMINS NICKEL PROJECT**  
LOCATION MAP



1 : 6,000,000



## Timmins Project Highlights

**Tier-1 Location In The Timmins Mining Camp** One of the most highly prolific mining districts in the world, and the number one district in Canada. This ever-expanding mining camp has been in production for over 100 years and is well supported with infrastructure including highways, relatively inexpensive hydroelectric power, a skilled workforce, and of course, is situated in the mining-friendly jurisdiction of Ontario, the second-largest producer of nickel in the world.

### Large Regional Historic Resources

With a legacy of over 100 years of continuous production, Timmins has delivered more than:

- 77 million ounces of gold
- 312 million ounces of silver
- 16 billion lbs. of zinc
- 12 billion lbs. of copper
- 82 million lbs. of nickel

### Strategically Situated

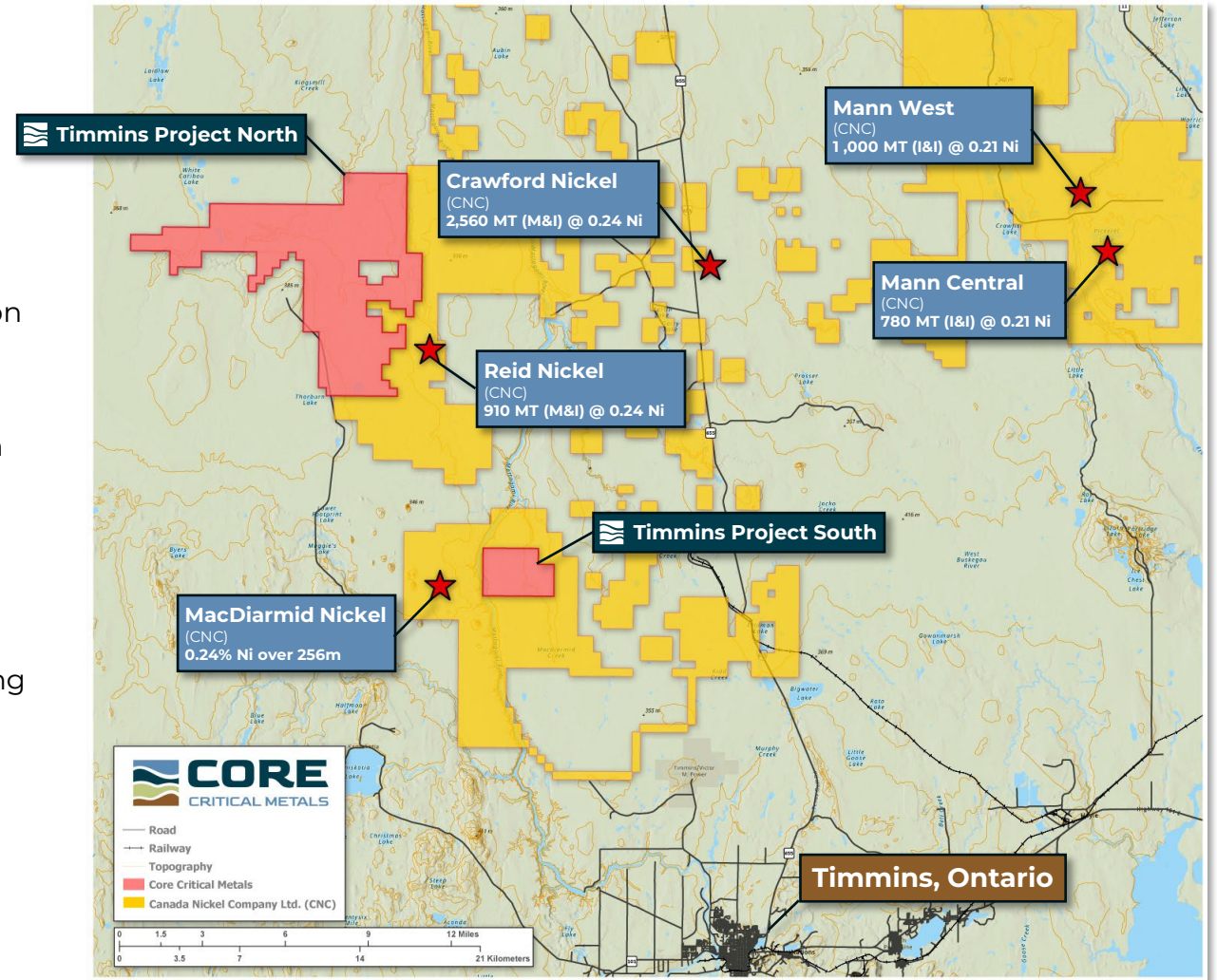
Adjacent to and along trend with the high-profile Crawford Project and Reid Discovery from Canada Nickel Company Inc. (TSX.V: CNC) with a current market capitalization of \$175 million.

### Strong Initial Results

Nickel mineralization confirmed in both North and South Blocks.

### Drill-Ready with Approved Permits

Fully permitted with defined targets, enabling immediate drilling to expand known mineralization.

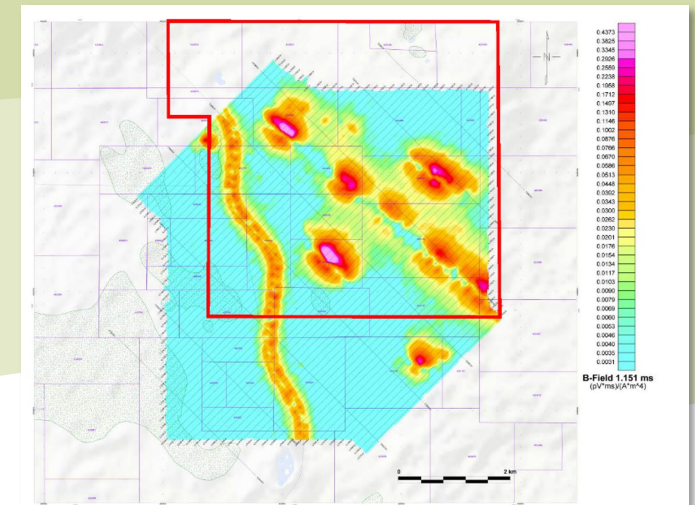
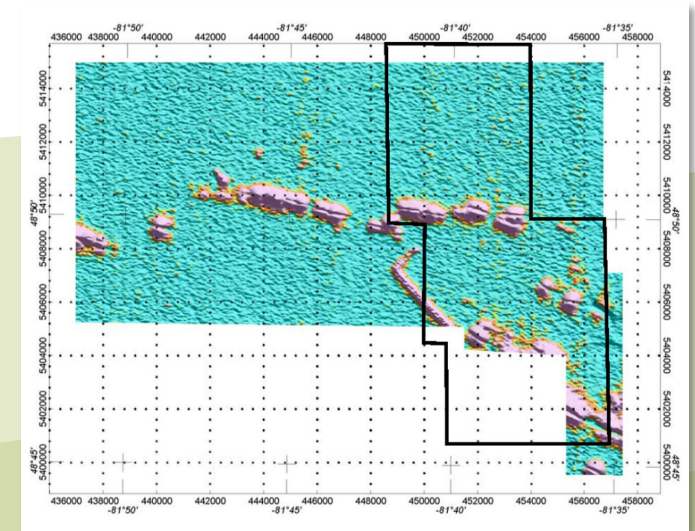
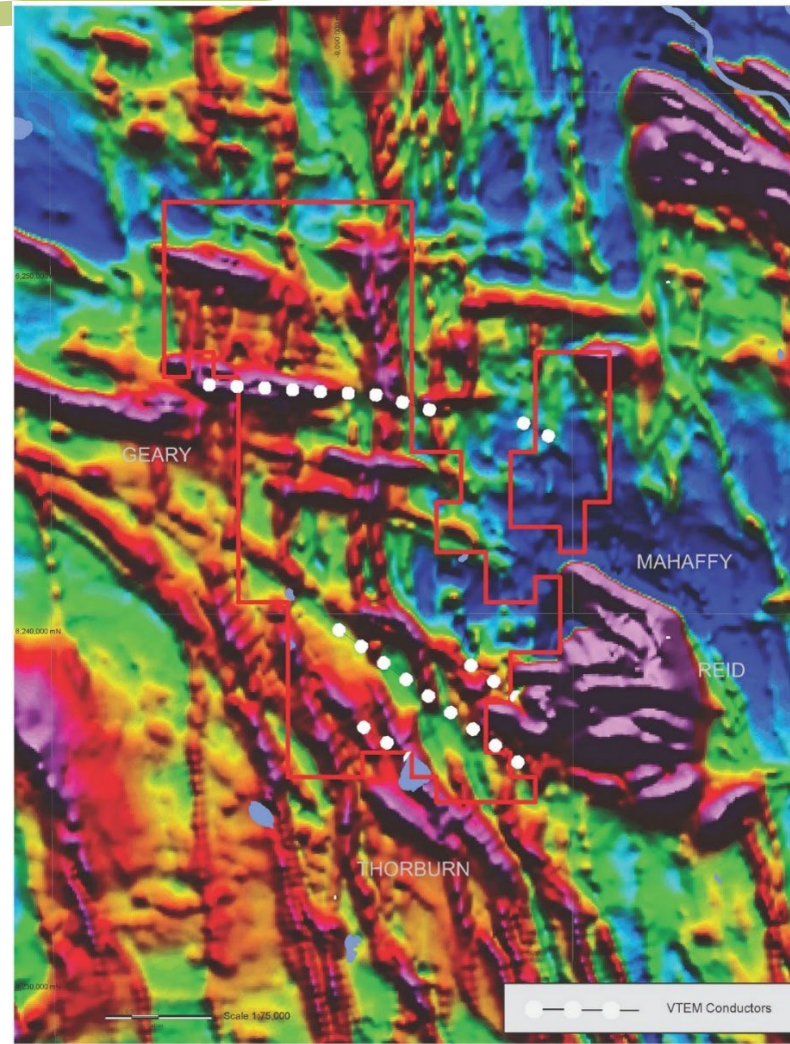


# TIMMINS PROJECT

## Timmins North Nickel Project

The “North Block” consists of 236 claims located approximately 21 kilometers west of Canada Nickel Company’s (CNC’s) Crawford Project.

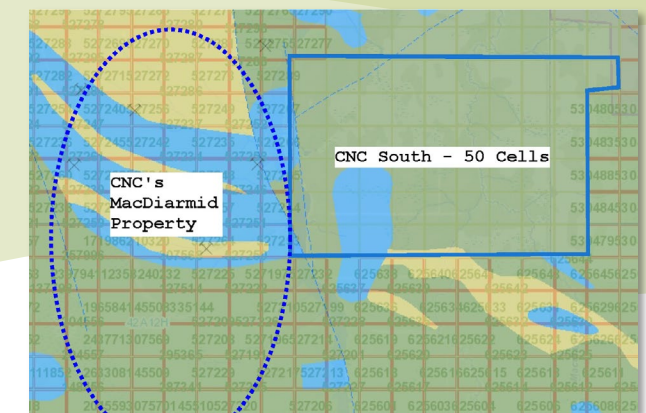
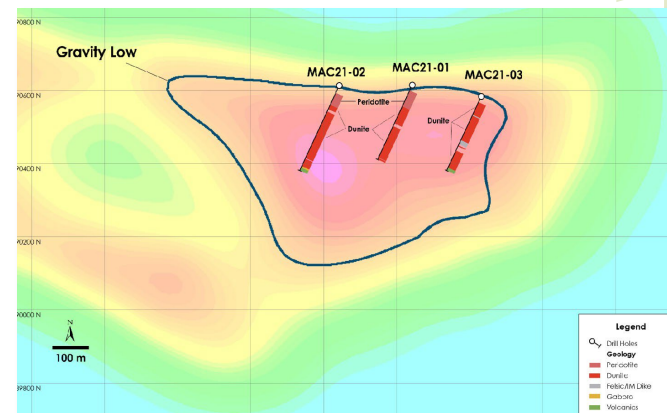
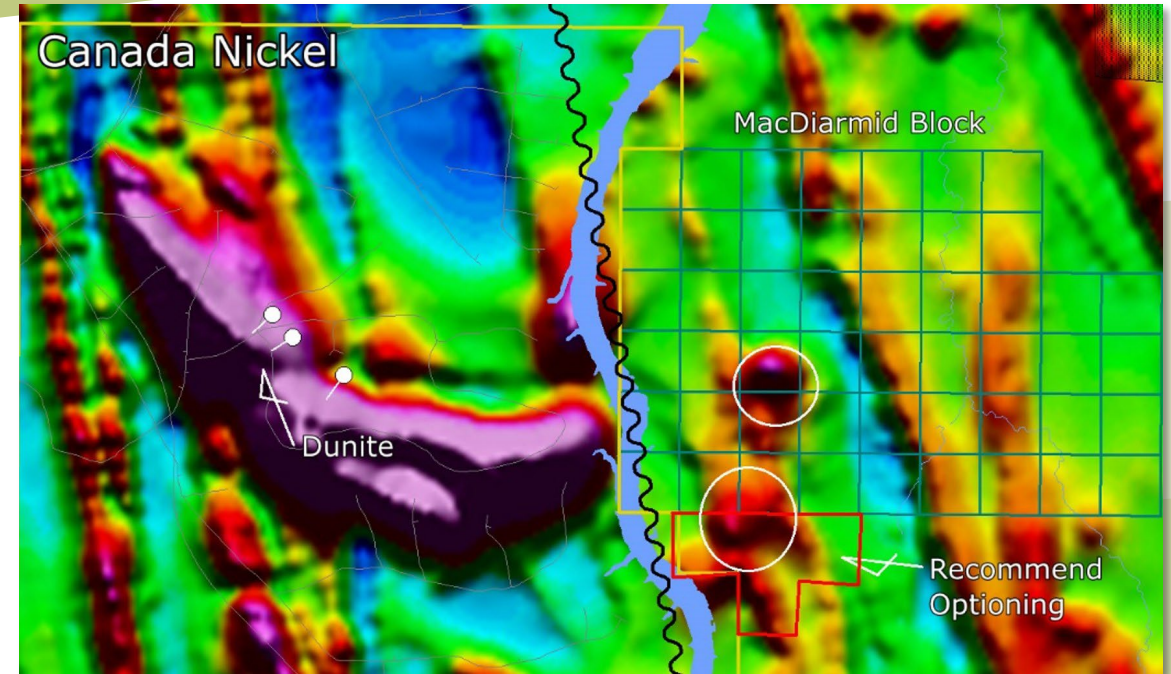
- Only 8 holes drilled (NKV22-01 to 03, NKV23-01 to 03). Notable result: Hole NKV22-03 intersected 11.5 m of 0.15% nickel from 244 m depth.
- This early-stage drilling confirms nickel-bearing ultramafic rocks and validates the geophysical targeting strategy. The next phase will include further drill testing and data integration to expand known mineralization.
- Geophysical surveys have been completed, including VTEM, that have outlined a series of conductors.



## Timmins South Nickel Project

The “South Block” consists of 50 claims contiguous to Canada Nickel’s MacDiarmid Project.

- Potential to use Glencore’s nearby Kidd Creek Mill for smaller scale start-up.
- Historic exploration work includes limited drilling with 0.132% Ni
- Geophysical surveys reveal the MacDiarmid target to be approximately 1.8 kilometers long indicating a structural footprint averaging 400 meters in width and 15% larger than CNC’s original Crawford’s Main Zone discovery.



## **Deepak Varshney, P.Geo.** CEO & Director

A seasoned executive and geologist with over 15 years of experience in the capital markets and mineral exploration and development sector, having raised over \$40 million in financing in the past three years. He is a professional geologist (P.Geo.) with expertise in strategic growth in junior mining companies, with demonstrated expertise in critical and precious metals. As President, CEO, Corporate Secretary & Director at Core Critical Metals Corp., Deepak applies his extensive background in fundraising, acquisitions, and project advancement to drive the company's strategic focus on copper, nickel and other critical minerals.

## **James Walker, P.Eng.** Director

An accomplished engineer and executive blending expertise in mining, nuclear energy, and project management. Has led complex projects across industries, including the United Kingdom Ministry of Defence. Served as CEO and Director with Ares Strategic Mining Inc. since 2016 securing a landmark \$169 million U.S. DoD contract for fluorspar supply, overseeing plant construction and acquisitions, expanding claim packages, brokering multinational agreements, and cultivating strong government support to position the company as America's premier fluorspar producer amid surging demand for critical minerals. As CEO and Board Member of NANO Nuclear Energy Inc. since 2022, leading the first publicly listed U.S. microreactor company to raise over \$600 million, secured grants and defense contracts (\$6.8 million Illinois facility award and AFWERX Phase 2 deal, addressing fuel supply chain challenges for AI data centers, remote communities, and military applications.

## **Rishi Kwatra** Director

A seasoned financial executive and entrepreneur experienced in corporate finance, mergers & acquisitions, and business development. He is a serial entrepreneur and savvy real estate investor who has successfully scaled multiple ventures. At New Energy Metals Corp., he served as CEO and Director demonstrating expertise in advancing critical mineral exploration through strategic growth initiatives to enhance shareholder value. As CEO of Molten Metals Corp. he has driven a strategic shift to a project generator model, secured exchange approval for acquisitions and raising capital to fund expansion in North American mineral assets.

## **Michael Dehn, P.Geo** Advisor

Geologist with over 25 years of industry experience, including senior roles with Goldcorp. Experienced in advancing, financing, and marketing exploration companies and currently CEO of Temas Resources and United Lithium.

## **Paul MGuigan, P.Geo** Advisor

Internationally recognized economic geologist with 45+ years of experience across multiple deposit types including porphyry, IOCG, VMS, and gold systems. Extensive experience from grassroots exploration through feasibility and operations.

# CAPITALIZATION

## Share Structure

<b>Shares</b>	<b>13,234,577</b>
<b>Warrants</b>	<b>5,413,158</b>
<b>Options</b>	<b>87,890</b>
<b>Fully Diluted</b>	<b>18,735,625</b>

<b>Company Name/Address:</b>	<b>Core Critical Metals Corp.</b> 1245 – 200 Granville St. Vancouver, BC V6C 2S4
<b>Trading Symbols:</b>	TSX.V: CCMC   OTC: CCMCF   FWB: 1X10
<b>CUSIP:</b>	21873W
<b>ISIN:</b>	CA21873W1095
<b>WKN:</b>	A41G8G
<b>Date/Place of Formation:</b>	09 DEC 2010
<b>Financial Year End:</b>	MARCH 31
<b>Industry Classification:</b>	Mining/Miner
<b>Transfer Agent:</b>	Endeavor Trust Corporation
<b>Auditor:</b>	Horizon Assurance LLP

**THANK YOU**

1245 – 200 Granville St.  
Vancouver, BC V6C 2S4

**1-(778) 899-1780**

**INFO@CORECRITICALMETALS.COM**



**CORE**  
CRITICAL METALS

CRITICAL METALS AT THE CORE  
OF ADVANCED TECHNOLOGIES  
AND DEFENSE

**CORECRITICALMETALS.COM**

CORPORATE PRESENTATION . 2026  
TSX.V: CCMC | OTC: CCMCF | FWB: 1X10